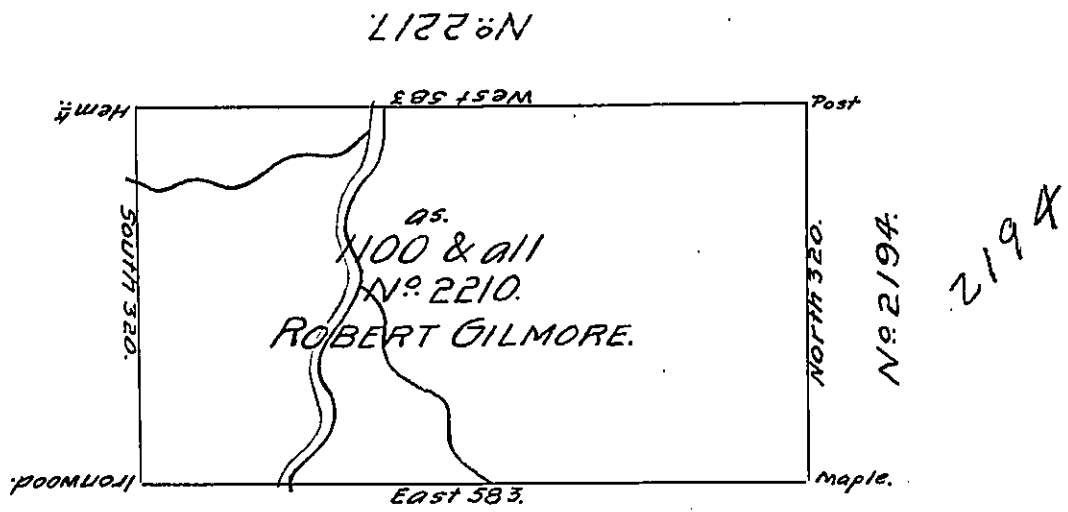


N<sup>o</sup> 67.



N<sup>o</sup> 2217

N<sup>o</sup> 2194

N<sup>o</sup> 2211.

Situate on a Branch of the Oswayo Creek about three Miles South of the State Line in North<sup>o</sup> County containing 1100 Acres and the Usual allowance for Roads.—  
 Surveyed June 19<sup>th</sup> 1793 for Robert Gilmore in perseverance of a Warrant N<sup>o</sup> 2210 bearing date—12<sup>th</sup> December 1792.

John Canan

Daniel Brodhead Esq. S.G.

D.S.

IN TESTIMONY that the above is a copy of the original remaining on file in the Department of Internal Affairs of Pennsylvania, made conformably to an Act of Assembly approved the 16th day of February, 1833, I have hereunto set my Hand and caused the Seal of said Department to be affixed at Harrisburg, this fourth day of November 1904.

*George P. Brown*  
 Secretary of Internal Affairs.